





NEXA Properties are pleased to offer this four bedroom terraced house situated on Twyford Avenue, Portsmouth.

This extremely spacious property which totals over 1,500 sq. feet of living accommodation, is in the heart of Stamshaw which is a popular place for commuters or those looking to base themselves near the Dockyard or Naval Bases.

The downstairs open plan living space opens through to the ground floor bathroom and then on to the kitchen.

The kitchen has a range of wall and base units with work surfaces over with inset stainless steel sink and drainer; under the counter there is space and plumbing for a range of freestanding appliances.

On the first floor there are three bedrooms and an additional shower room. The final bedroom is in the loft room, which has been cleverly converted to leave some eaves storage space.

The garden is hard landscaped and laid with patio, with a wooden garden shed.

Offered unfurnished and

- UNFURNISHED
- FOUR BEDROOMS
- TWO BATHROOMS
- OPEN PLAN LIVING SPACE
- AVAILABLE JULY
- SPACIOUS GARDEN



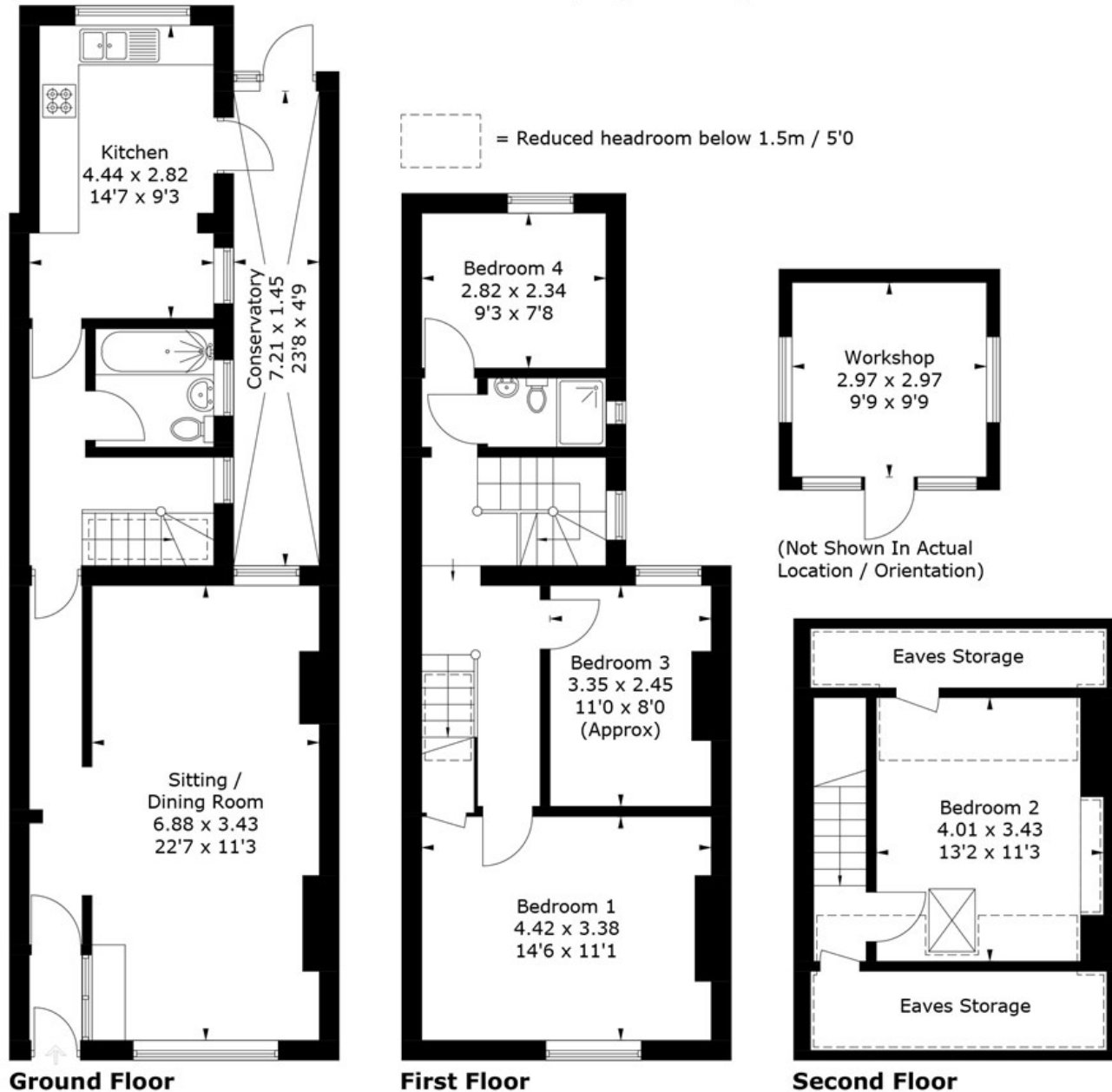
# Twyford Avenue, PO2 8JB

Approximate Gross Internal Area = 140.5 sq m / 1512 sq ft

(Including Eaves Storage)

Workshop = 8.7 sq m / 94 sq ft

Total = 149.2 sq m / 1606 sq ft



PRODUCED FOR NEXA PROPERTIES

Whilst every attempt has been made to ensure the accuracy of the floorplan, measurements of doors, windows and rooms are approximate. These plans are for representation purposes only as defined by RICS Code of Measuring Practice and used as such by any prospective purchaser. (ID922879)